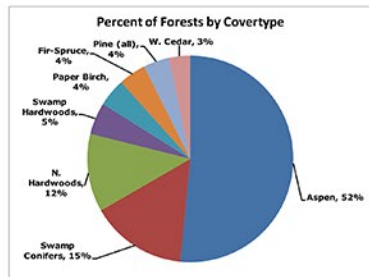
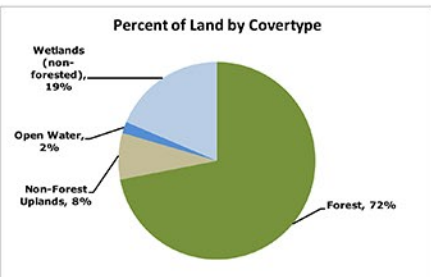
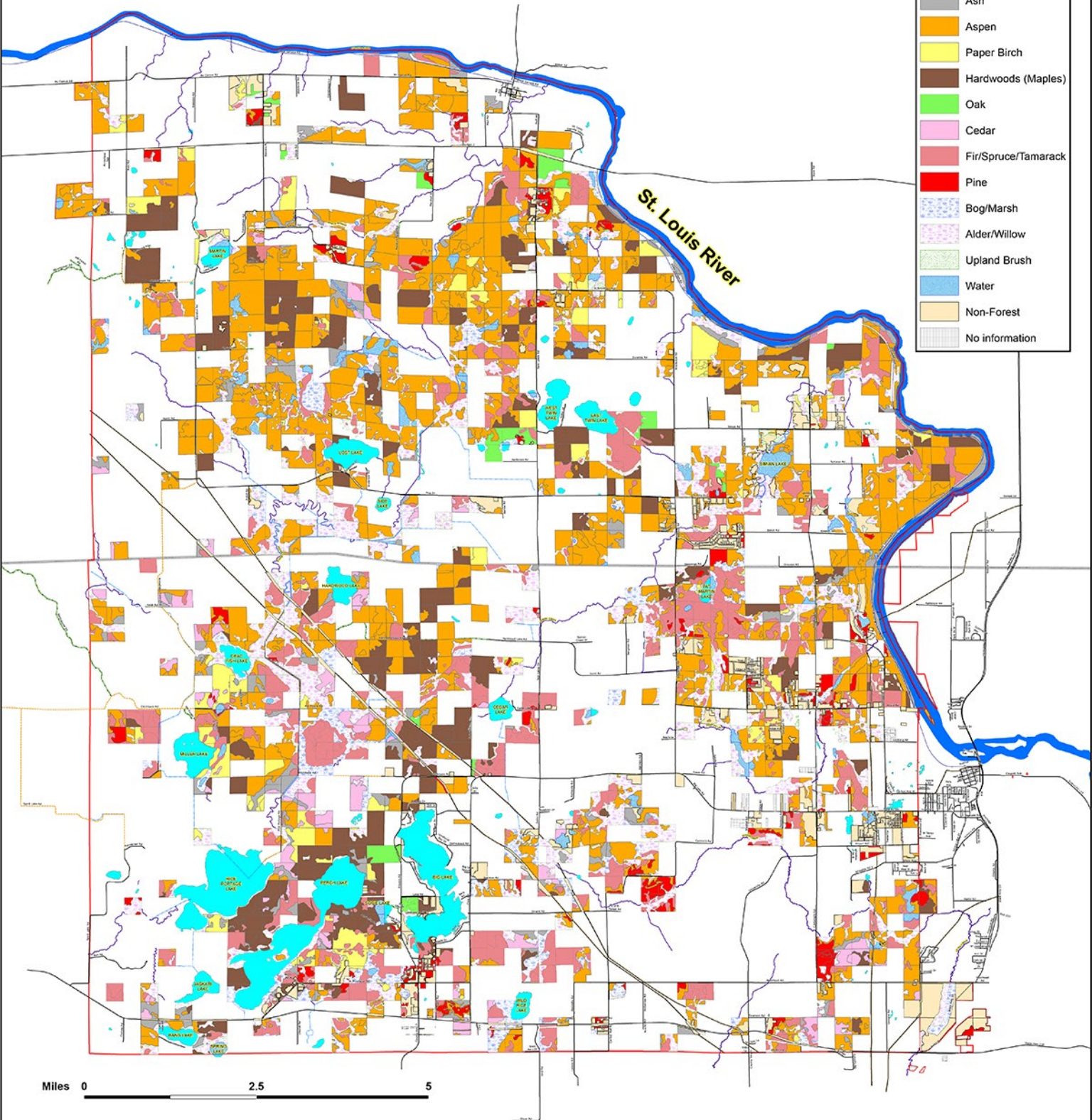
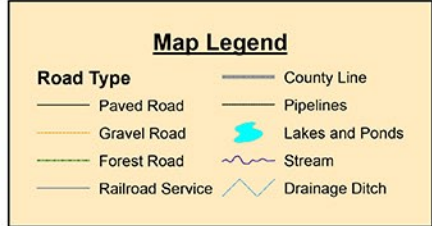


Fond du Lac Land Cover Types 2018



Note:
 This map shows the primary (dominant) and cover type for a given area. This determination was made using aerial photography and using standard forest inventory procedures in the field.
 For forested areas the cover type shown represents the dominant tree species. Many other tree species are present in most stands.
 For example, most aspen dominated stands have a component of paper birch and red maple and may be more of an aspen maple. Wetland stands generally consist of sugar maple, red maple, basswood, and yellow birch.



Map by: Christine Nelson
 GIS Technician
 10/17/2018
 SOURCE: USGS
 10/18/2018